

Access Support *at a glance*



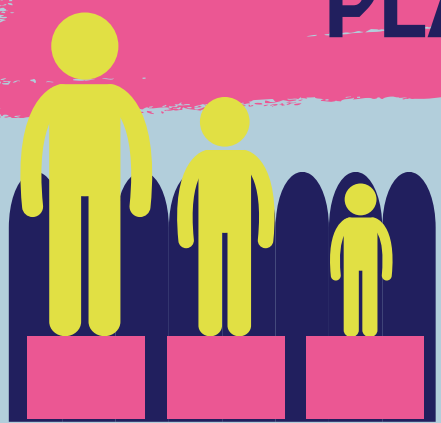
WHO ARE ACCESS STUDENTS?

Access students are students who are under 23 years of age, who enter TU Dublin through one of four Access entry routes (HEAR, Access TU Dublin, QQI Access TU Dublin, & Access Foundation Programme [AFP]).

WHAT ARE ACCESS ENTRY ROUTES?

These are admission schemes to promote equity of access to higher education for school leavers from socio-economically disadvantaged backgrounds.

WHAT IS THE NATIONAL ACCESS PLAN?



EQUALITY



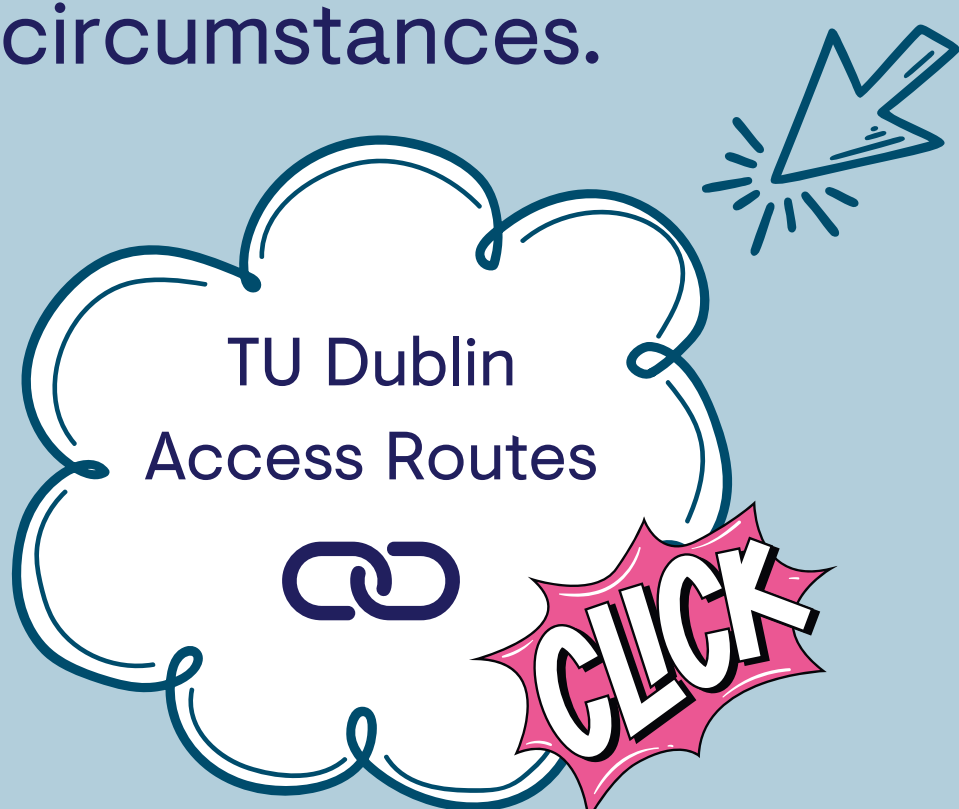
EQUITY

Equity of access to higher education is a fundamental principle of Irish education policy and is the key principle of The National Access Plan 2022-2028 which underpins the work of the Access Support Team. It sets ambitious goals targeting increased access and participation of students from underrepresented groups.



WHO IS ELIGIBLE?

To be eligible for the schemes you must meet certain indicators (or criteria) related to your financial, social and cultural circumstances.



HOW DOES TU DUBLIN SUPPORT ACCESS STUDENTS?



Dedicated Access Support Staff



Access Orientation Programme



Referral and Advocacy



Peer Mentoring



Academic, Social & Financial Advice and Support

